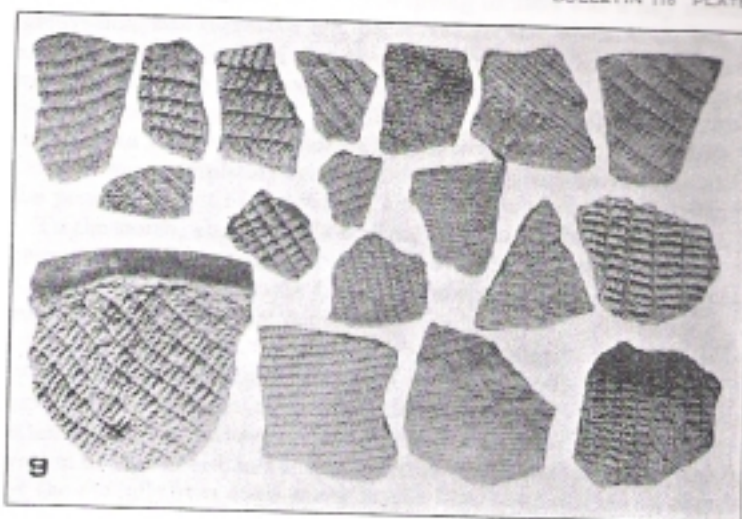


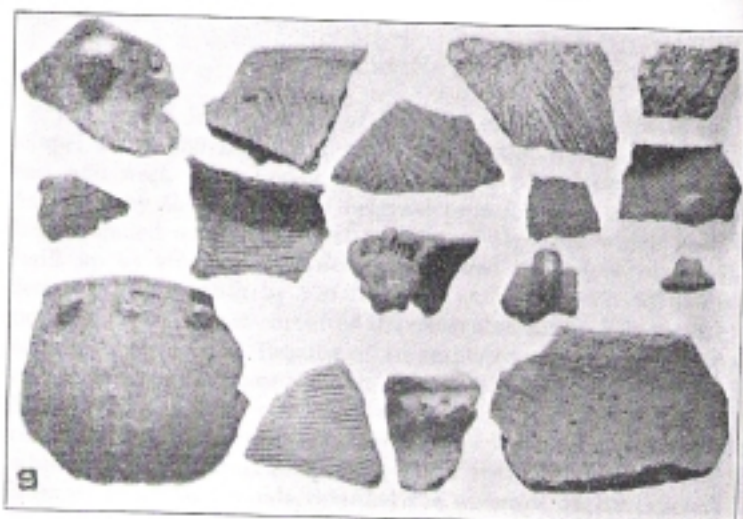


BUREAU OF AMERICAN ETHNOLOGY

BULLETIN 116 PLATE

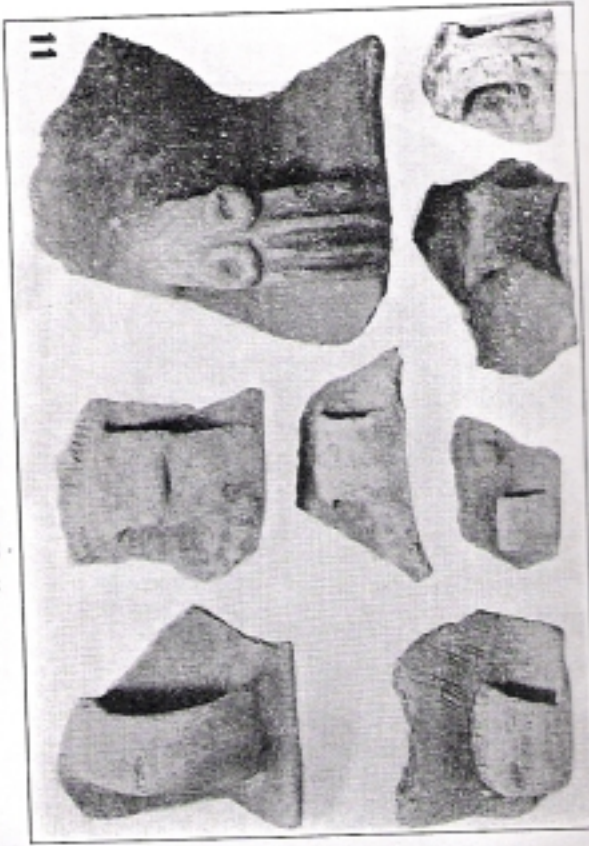


g. Types of textile-marked salt-pan sherds from general digging. Site No. 9.



g. Miscellaneous sherds, including a fragment of a pointed rim, a large bowl, and two effigy heads.

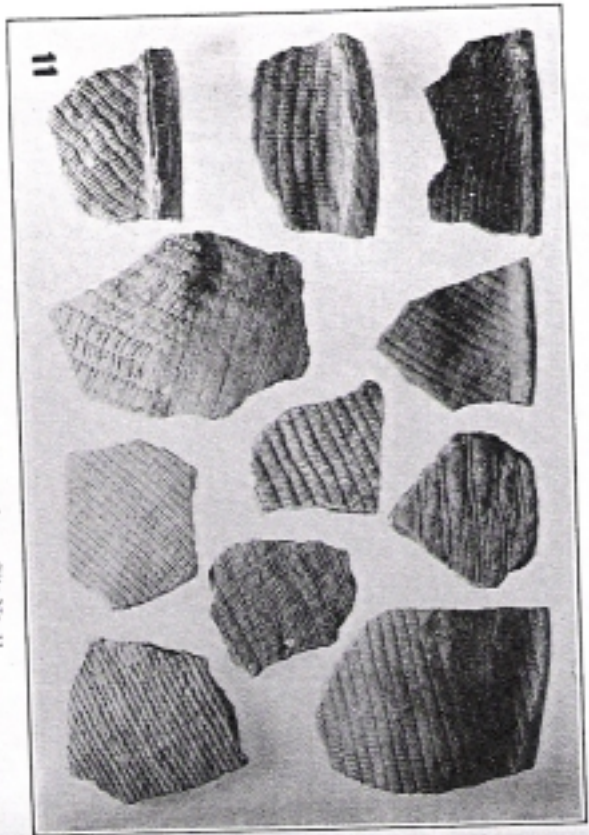




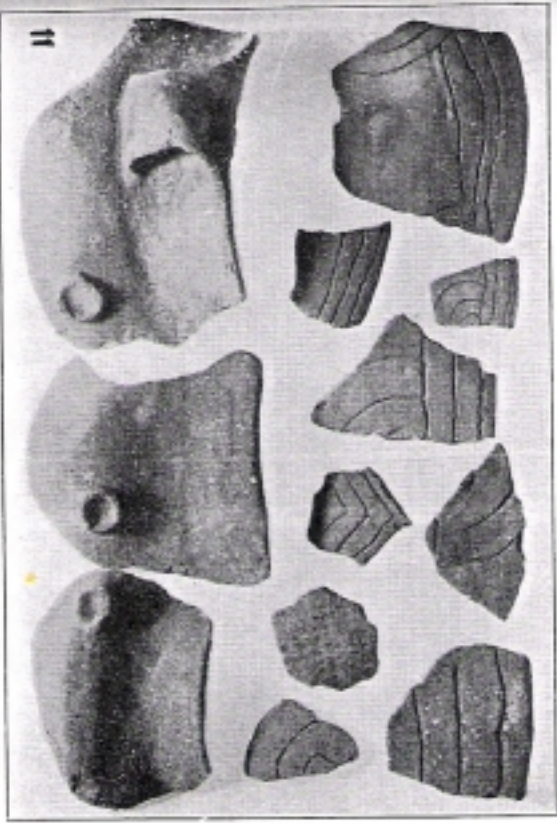
9. Strap-handle variations. Site No. 11.



10. Three bowls, a polished rim jar, and the body of a plain jar from the floor of a deserted dwelling. Site No. 11.



8. Salt-jan sherds with fabric impressions. Site No. 11.



11. Type group, incised decoration on bowl rim and a griffed strap handle; lower rim, strap handle and shoulder protrusion on a jar. Site No. 11.



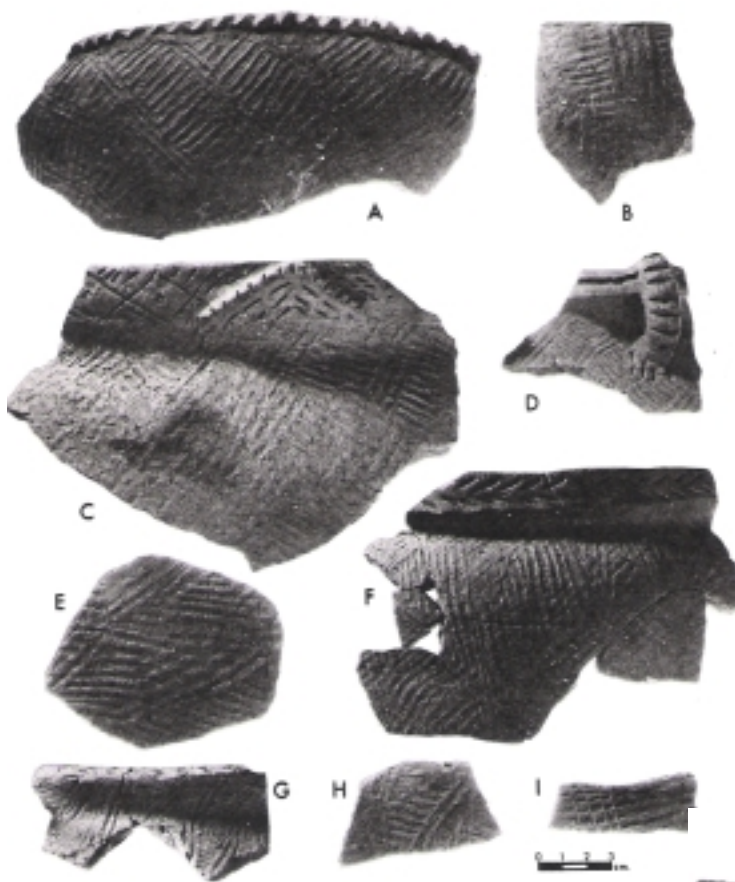
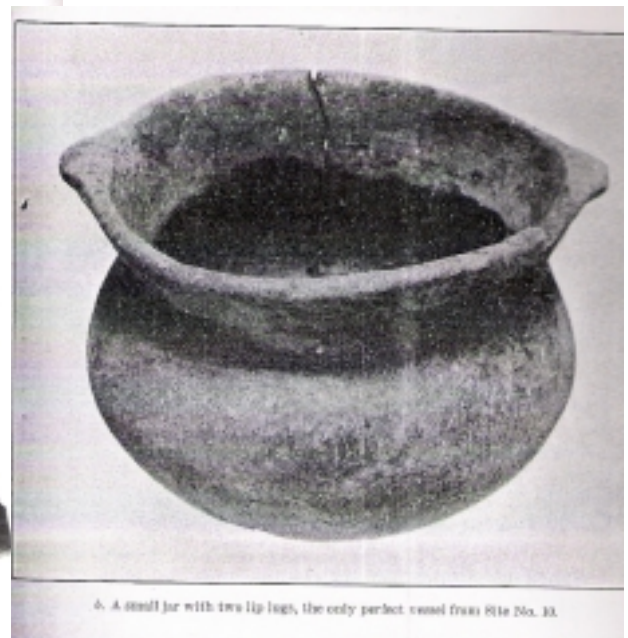


PLATE 62. Pisgah sherds. A-D, Pisgah Rectilinear Complicated Stamped sign A (A-C, broad variety; D, narrow variety); E-H, Pisgah Rectilinear Cated Stamped, Design B (E, first variety; F, second variety; G and H, 1 variety); I, Pisgah Rectilinear Complicated Stamped, Design C.



FIGURE 65.—Drawing restoration of vessel and handle. The mouth of the vase shown in plate 61 is represented by the dashed line.



6. A small jar with two lip legs, the only perfect vessel from Site No. 11.

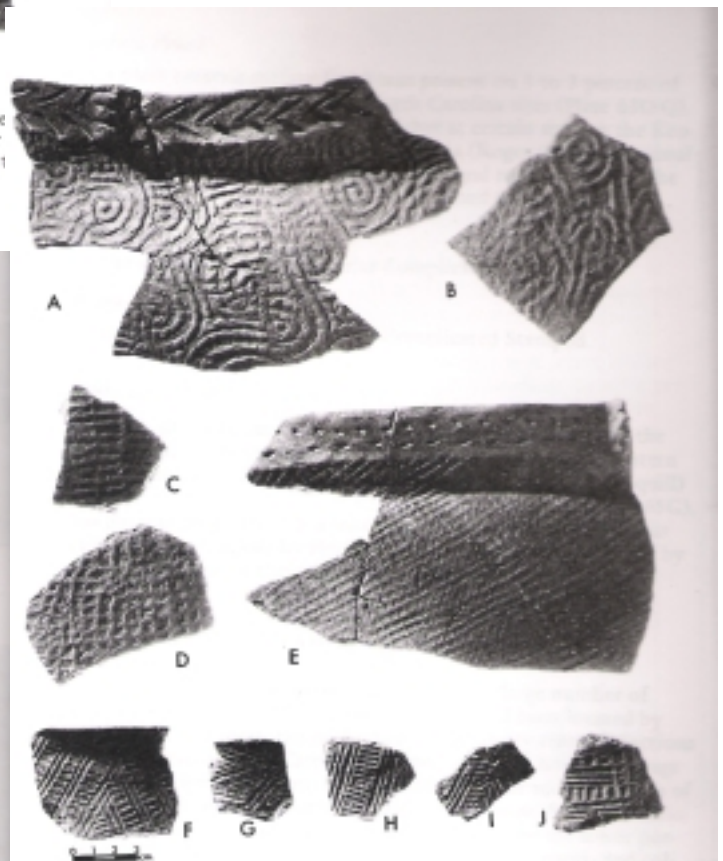


PLATE 64. Pisgah and proto-Pisgah sherds. A, Pisgah Curvilinear Complicated Stamped, Design B; B, Pisgah Curvilinear Complicated Stamped, Design A. C-E, Pisgah Check Stamped; F-J, Connestee Complicated Stamped with proto-Pisgah motifs.