

# Woktela's Early Pipes

#40



#45

- Raccoon Effigy in Murphy Talc
- Raccoon Effigy in Cave Onyx
- Train Effigy in Murphy Talc
- Buffalo Effigy in Slate
- Gryphon Effigy in Slate & Catlinite



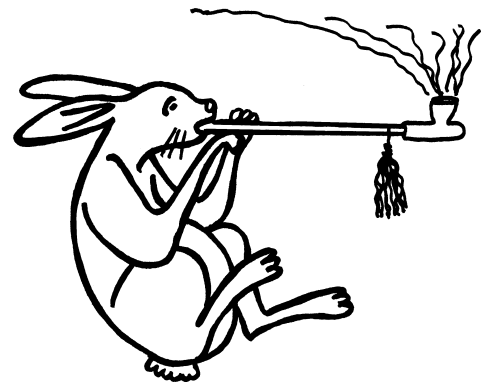
#48

#5



#47

#s7, 5, 23, 43



#69 & 70

Foot Fetish Pipes

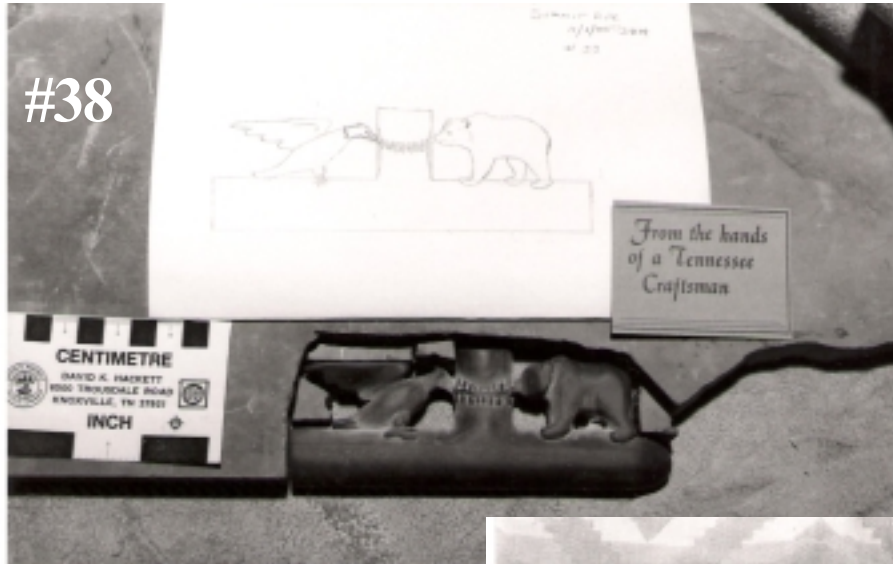


Amerind Folk Crafts



*Woktela*  
Trickster's Fool

#38



# Slate Pipes

#89



#41



#s 5, 7, 10, 23

#90 & 91

